







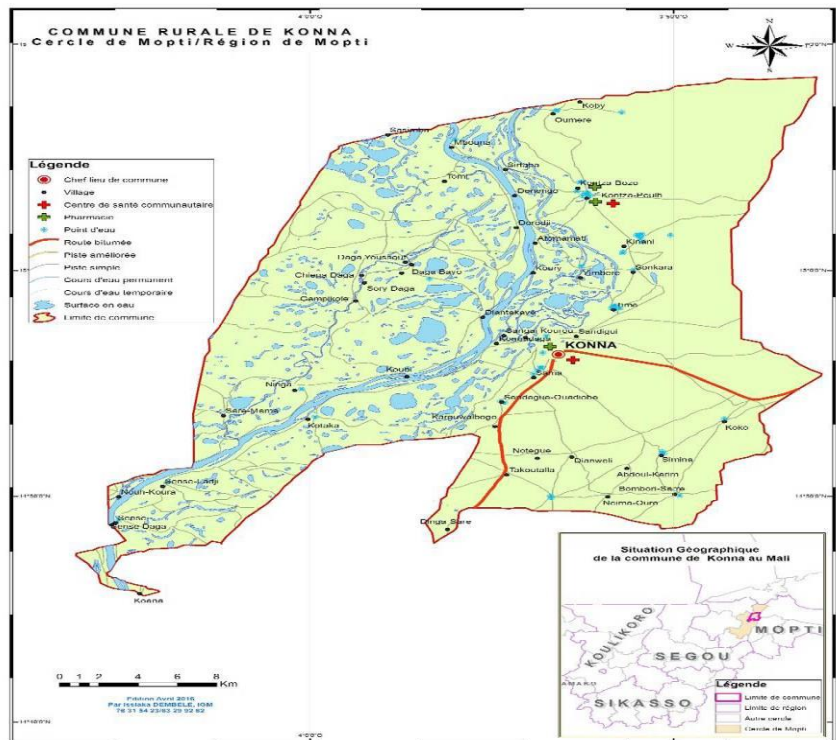


EMERGENCY DEVELOPMENT PROGRAMME (PDU)

Konna Reconstruction and Economic Recovery Project

	DONOR(S) The World Bank
	COUNTRY Mali
	CODE P144442
	AMOUNT 26.000.000 €
	DATES 06.12.2013 - 01.12.2020
	PHASE Implementation
	PARTNERS Ministry of Economy and Finances
	PDU PILLAR II) Resilience to food insecurity



DESCRIPTION

Since 2013, the World Bank has been financing the Economic Recovery and Reactivation Programme (PRRE) which is implemented in the region of Mopti, Gao, Timbuktu and Kidal in Mali, with a total amount of EUR 116.5 million. In 2018, an additional funding of EUR 26 million (USD 30 million) was made available by the Bank within the margins of the PRRE for the Konna Economic Recovery and Stabilisation Project.

The aim of this project is to rebuild the port of Konna and the roads between the villages in the area in order to accelerate the resumption of economic activity and to facilitate economic exchanges. At the same time, the project measures create jobs and self-employment opportunities directly linked to fishing, agriculture and livestock farming.

The project is part of the G5 Sahel's [Emergency Development Programme \(PDU\)](#) which is financed by the members of the Sahel Alliance and aims at stabilising the border regions of the G5 countries by launching quick-impact development projects.

OBJECTIVES

The Konna Recovery and Stabilisation Project aims at rehabilitating basic infrastructure and restoring productive activities in crisis-affected communities in Mali. Concretely, the project aims at the construction of a road linking the port of Konna to the national road, the construction of the central market of Konna, the construction of an early childhood centre, as well as the training of fishermen on new production techniques including floating cages. It also plans for the construction of a youth centre to offer specific training courses in areas such as entrepreneurship and digital technologies, as well as to offer gender-based violence prevention and care measures.

PROJECT PROGRESS

The initial project activities for the rehabilitation of the fishing port in Konna are to 95% completed, with the reconstruction of the water tower and the fuel station remaining to be finalised. In 2019, the number of direct beneficiaries of the PREE has increased to 1.415.747 (97% of the target group). Out of the reached beneficiaries, 97% are benefiting from rehabilitated public infrastructures and 3% from rehabilitated production assets.

Given the context of insecurity in Mali and the restrictions imposed in the context of COVID-19, the project activities are evolving slowly. It should be noted that the project intervenes in the central and northern regions of Mali, but that the activities in centre have been coordinated in synergy with other donors.



Photo credit: Mathieu Arnaudet – AFD

Ongoing activities:

- ✓ Technical studies have been carried out and the reports are being finalised;
- ✓ Concerning the construction of gutters and street lamps, revised Terms of Reference will be submitted to the World Bank;
- ✓ The title of the activity “Extension of the road network in Gao (2x2 lane from SONEF Station to Place Ziguinchor)” will be clarified;
- ✓ In Taoudeni, the supply and distribution of drinking water will be implemented by using the wells already drilled by the partners commune in a commune 30 km away;
- ✓ The project is waiting for the urbanisation plan necessary for the implementation of its activities in Taoudeni.

Note: Please note that the Konna Reconstruction and Economic Recovery is one of the projects of the Mali Reconstruction and Economic Recovery programme of the World Bank which intervenes in the region of Mopti, Gao, Timbuktu and Kidal.

What is the Emergency Development Programme?

In 2018, the Heads of State of the G5 Sahel asked the Executive Secretariat of the G5 Sahel (SEG5 Sahel) to launch quick-impact emergency projects. Consequently, the Emergency Development Programme (PDU) came into life in order to stabilise fragile border areas identified by the G5.

In response to the G5 Sahel's request to finance the PDU, the Sahel Alliance's members collectively mobilised 119 million Euro dedicated to 21 projects and programmes in total. These projects meet the following 3 criteria:

- I. The project is located in sensitive cross-border areas as identified by the G5
- II. The project responds to specific thematic or sectoral issues
- III. Actual achievements are visible by the end of 2018 / beginning of 2019