







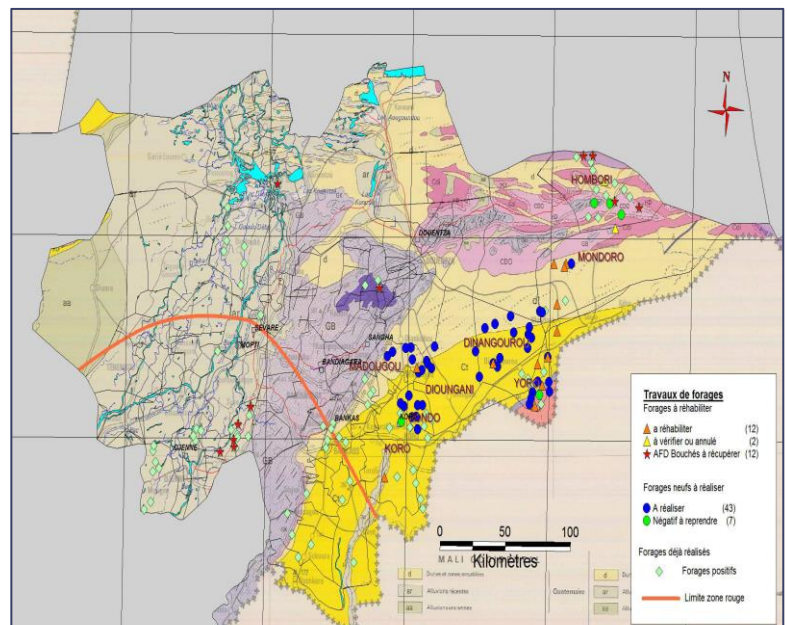


## EMERGENCY DEVELOPMENT PROGRAMME (PDU)

### Water Supply and Sanitation Project in 18 Municipalities of the Mopti Region

	<b>DONOR(S)</b> French Development Agency (AFD)
	<b>COUNTRY</b> Mali
	<b>CODE</b> CML6007
	<b>AMOUNT</b> 11.300.000 € (PDU amount : 800.000 €)
	<b>DATES</b> 24/05/2007-30/06/2018
	<b>PHASE</b> Closed
	<b>PARTNERS</b> National Water Directorate
	<b>PDU PILLAR</b> I : Access to water and sanitation



Mopti region in Mali

## DESCRIPTION

The armed rebellion in Northern Mali in January 2012 constitutes one of the most serious and devastating crises in the country's history. The consequent military coup on 22 March 2012 led to the occupation of the three Northern regions, including the cities of Timbuktu, Gao, Kidal and Mopti, by armed independence and Islamist groups.

As for the city of Mopti, its water supply system came under immense pressure due to the arrival of displaced populations from the occupied regions and the armed forces engaged in the reconquest of the occupied territories.

After the liberation of the occupied cities, the construction of a functional drinking water supply system was essential to allow for the urgently needed return of administrative and financial services in order to restart economic activity.

## OBJECTIVE

Since 2009, the drinking water supply and sanitation programme financed by the French Development Agency (Agence Française de Développement, AFD) with an amount of EUR 11.300.000 aimed to increase access rates to drinking water and sanitation in 18 communes in the Mopti region.

In 2018, to respond to a request of the Heads of State of the G5 Sahel in the margins of the Emergency Development Programme (PDU), which is financially supported by the Sahel Alliance, the AFD mobilised an additional amount of EUR 800.000 within the framework of this project. The PDU specifically targets fragile border areas of the G5 Sahel countries. The project allowed for the construction of drinking water supply facilities meeting the demands of the population, for the development and promotion of sanitation as well as for the accompanying measures aimed at reliable and sustainable water service management.

## PROJECT IMPLEMENTATION

This project started in 2009 and was completed in 2019. Its implementation has been severely affected by the security crisis that has been raging in central and northern Mali since 2012. The project has equipped a total of 182 urban and rural centres in the Mopti region in Mali with different types of drinking water supply and sanitation (WASH) facilities, such as tank wells, human-powered pumps, improved village hydraulics systems, basic water supply systems and complete supply systems, according to the size of each locality. The total beneficiary population is estimated at 205.000 people.

The main activities carried out at the end of the project in 2019 in the margins of the PDU were the following:

- Finalisation of the Koro and Gakou drinking water supply sites
- Three new water supply systems
- Finalisation of the Samba Dramané market
- Implementation of management structures



Source : Agence Française de Développement



Source : Agence Française de Développement

### What is the Emergency Development Programme?

In 2018, the Heads of State of the G5 Sahel asked the Executive Secretariat of the G5 Sahel (SEG5 Sahel) to launch quick-impact emergency projects. Consequently, the Emergency Development Programme (PDU) came into life in order to stabilise fragile border areas identified by the G5.

In response to the G5 Sahel's request to finance the PDU, the Sahel Alliance's members collectively mobilised 199 million Euro dedicated to 21 projects and programmes in total. These projects meet the following 3 criteria:

- I. The project is located in sensitive cross-border areas as identified by the G5
- II. The project responds to specific thematic or sectoral issues
- III. Actual achievements are visible by the end of 2018 / beginning of 2019